



Students

RACIAL/ETHNIC BACKGROUND AND OTHER INFORMATION

	White	Black	Hispanic	Asian/ Pacific Islander	Native American	Students with Disabilities	Economi- cally Disadvan- tage	Limited- English- Proficient Rate	High Sch. Dropout Rate	Atten. Rate	Testing Enrollment*
School	97%	2.00%	0.00%	0.00%	1.00%	13%	18.00%	30.00%	*	94%	677
State	95%	2.20%	0.97%	1.40%	0.48%	16.70%	36.34%	1.79%	13%	95%	47,636

*Testing enrollment reflects the number of students who participated in the Maine Educational Assessment or the SAT

TEACHER INFORMATION

	Average Teaching Experience (Years)	% of Teachers with Bachelor's Degrees	% of Teachers with Master's & Above	% of Teachers with Conditional, Targeted Needs, or Transitional Certification	% of classes Not Taught by Highly Qualified Teachers
District	16.2	56%	43%	6%	9%
State		65%	34%		5.60%
Middle School	13	52%	48%	5.50%	12%

FEDERAL ADEQUATE YEARLY PROGRESS

Federal Adequate Yearly Progress (FAYP) is the term used to describe the academic progress expected of each school each year in meeting the goal of teaching all students what they need to know. * AYP was not calculated for 2006

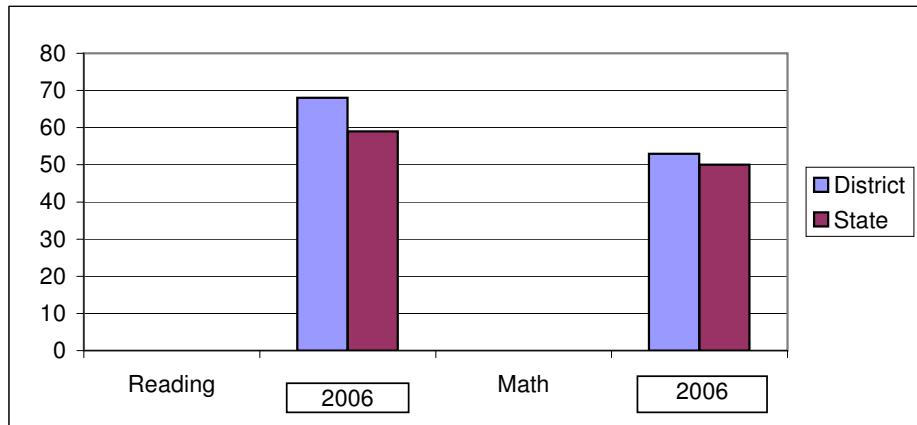
	Reading	Math
Middle School	Made AYP	Made AYP

ACADEMIC PERFORMANCE

These charts present the overall percentages of Maine Educational Assessment test scores categorized as meeting or exceeding the Maine Learning Results for the state and individual grade levels. For each subject area, two years of performance are reported. (*) score not reported academic year.

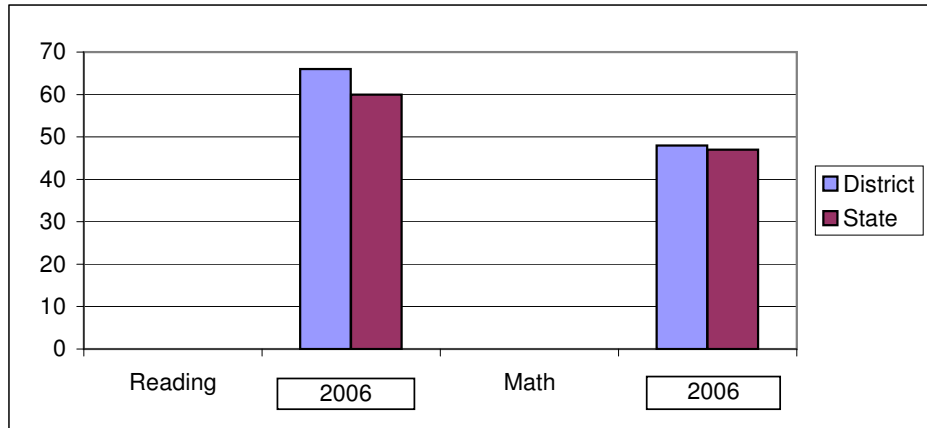
Grade 6

Year	Reading		Math	
	2005	2006	2005	2006
District	*	68	*	53
State	*	59	*	50



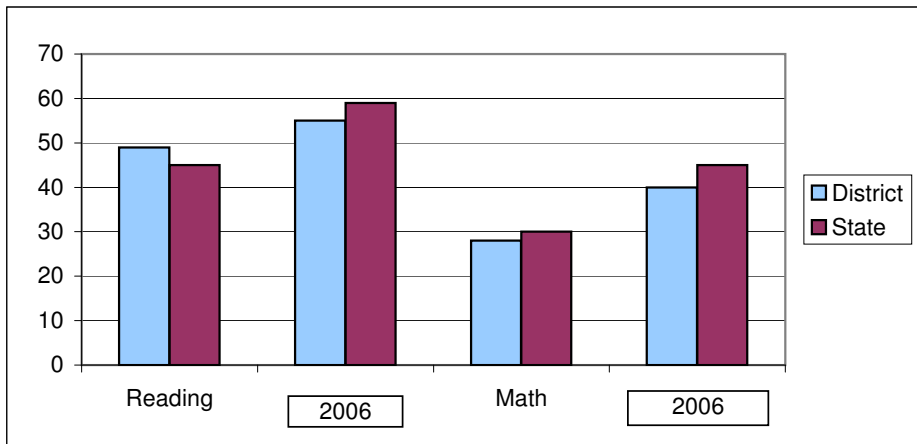
Grade 7

Year	Reading		Math	
	2005	2006	2005	2006
District	*	66	*	48
State	*	60	*	47



Grade 8

Year	Reading		Math	
	2005	2006	2005	2006
District	49	55	28	40
State	45	59	30	45



PERFORMANCE OF STATE ASSESSMENTS

Maine Learning Results

The following tables show the percentages of student scores in each of three performance levels. These levels were established with the help of Maine educators who teach the grade levels and learning areas tested. Due to rounding, the sum of the percentages in the three performance levels may not always equal 100.

1. Does not meet - (DNM) The student's work demonstrates limited knowledge and skills in the subject area.
2. Partially Meet- (PM) The student's work demonstrates a general understanding of essential concept in the subject area.
3. Meets Standards- (M) The student's work demonstrates proficient knowledge and skills in the subject area.
4. Exceeds Standards- (E) The student's work demonstrates advanced knowledge and skills in the subject area.

Grade 6

Percentage of students tested

District	100
State	99

Level	Reading			Mathematics		
	E/M	PM	DNM	E/M	PM	DNM
District	68	22	10	53	32	14
State	59	27	13	50	30	20

Grade 6 - Gender

Level	Reading			Mathematics		
	E/M	PM	DNM	E/M	PM	DNM
Male						
District	65	23	12	49	36	15
State	54	30	16	49	30	21
Female						
District	70	22	8	58	28	14
State	64	25	11	50	31	20

Grade 6- Racial/Ethnic Background

Level	Reading			Mathematics		
	E/M	PM	DNM	E/M	PM	DNM
White						
District	68	22	9	55	32	14
State	60	27	13	50	30	20
Black						
District	50	33	17	17	33	50
State	36	30	33	27	31	42
Hispanic						
District	*	*	*	*	*	*
State	46	29	26	34	31	35
Asian/Pacific Islander						
District	*	*	*	*	*	*
State	63	23	14	64	26	10
Native American						
District	*	*	*	*	*	*
State	33	42	25	28	38	34
Multiracial/Ethnic						
District	*	*	*	*	*	*
State	45	18	36	25	42	33

Grade 6- Students with Disabilities

Level	Reading			Mathematics		
	E/M	PM	DNM	E/M	PM	DNM
IEP						
District	30	30	39	27	27	45
State	20	36	44	17	30	53
Non-IEP						
District	72	21	6	56	33	11
State	66	26	8	55	30	14

Grade 6- Economically Disadvantaged

Level	Reading			Mathematics		
	E/M	PM	DNM	E/M	PM	DNM
Disadvantaged						
District	43	30	27	28	44	28
State	45	34	21	37	34	29
Not-Disadvantaged						
District	73	21	6	58	30	12
State	67	24	9	57	28	15

Grade 7**Percentage of students tested**

District	100
State	99

Level	Reading			Mathematics		
	E/M	PM	DNM	E/M	PM	DNM
District	66	20	14	48	30	22
State	61	24	16	47	29	25

Grade 7 - Gender

Level	Reading			Mathematics		
	E/M	PM	DNM	E/M	PM	DNM
Male						
District	65	15	20	52	29	19
State	55	25	19	47	28	25
Female						
District	67	25	8	43	31	25
State	65	23	12	45	30	24

Grade 7- Racial/Ethnic Background

Level	Reading			Mathematics		
	E/M	PM	DNM	E/M	PM	DNM
White						
District	67	20	14	48	31	22
State	61	24	15	47	29	24
Black						
District	*	*	*	*	*	*
State	43	27	30	27	34	39
Hispanic						
District	*	*	*	*	*	*
State	57	23	20	37	28	35
Asian/Pacific Islander						
District	*	*	*	*	*	*
State	59	26	15	55	25	20
Native American						
District	*	*	*	*	*	*
State	32	31	27	24	28	48
Multiracial/Ethnic						
District	*	*	*	*	*	*
State	54	38	8	38	31	31

Grade 7- Students with Disabilities

Level	Reading			Mathematics		
	E/M	PM	DNM	E/M	PM	DNM
IEP						
District	28	33	39	28	22	50
State	19	32	50	13	26	61
Non-IEP						
District	70	19	12	49	31	20
State	67	23	9	52	30	18

Grade 7- Economically Disadvantaged

Level	Reading			Mathematics		
	E/M	PM	DNM	E/M	PM	DNM
Disadvantaged						
District	40	29	31	20	34	36
State	45	30	25	32	32	37
Not-Disadvantaged						
District	71	18	11	53	29	18
State	68	21	10	54	28	18

Grade 8

Percentage of students tested

District	100
State	99

Level	Reading			Mathematics			Science		
	E/M	PM	DNM	E/M	PM	DNM	E/M	PM	DNM
District	55	24	20	40	36	24	71	22	7
State	59	23	18	45	29	26	65	22	13

Grade 8 - Gender

Level	Reading			Mathematics			Science		
	E/M	PM	DNM	E/M	PM	DNM	E/M	PM	DNM
Male									
District	47	30	23	42	34	25	72	19	9
State	52	25	23	44	28	28	65	21	14
Female									
District	67	17	17	38	39	23	69	26	5
State	66	21	13	45	31	24	64	24	12

Grade 8- Racial/Ethnic Background

Level	Reading			Mathematics			Science		
	E/M	PM	DNM	E/M	PM	DNM	E/M	PM	DNM
White									
District	57	23	20	41	36	24	70	22	8
State	59	23	18	45	30	26	65	22	13
Black									
District	*	*	*	*	*	*	*	*	*
State	42	26	31	24	27	49	43	27	30
Hispanic									
District	*	*	*	*	*	*	*	*	*
State	47	19	35	38	28	34	50	25	26
Asian/Pacific Islander									
District	*	*	*	*	*	*	*	*	*
State	65	19	16	60	17	23	64	20	16
Native American									
District	*	*	*	*	*	*	*	*	*
State	38	30	31	30	33	38	47	29	24
Multiracial/Ethnic									
District	*	*	*	*	*	*	*	*	*
State	54	15	31	25	17	58	75	8	17

Grade 8- Students with Disabilities

Level	Reading			Mathematics			Science		
	E/M	PM	DNM	E/M	PM	DNM	E/M	PM	DNM
IEP									
District	22	22	56	6	32	62	42	42	17
State	16	27	57	12	25	63	30	30	40
Non-IEP									
District	61	25	14	46	37	18	76	19	6
State	66	22	12	50	30	20	71	21	9

Grade 8- Economically Disadvantaged

Level	Reading			Mathematics			Science		
	E/M	PM	DNM	E/M	PM	DNM	E/M	PM	DNM
Disadvantaged									
District	45	26	29	30	41	30	57	35	8
State	43	27	29	30	31	38	51	27	22
Not-Disadvantaged									
District	57	24	19	42	35	23	73	20	7
State	66	21	13	52	28	20	71	20	9